

Integrated Marine and Coastal Security Solution

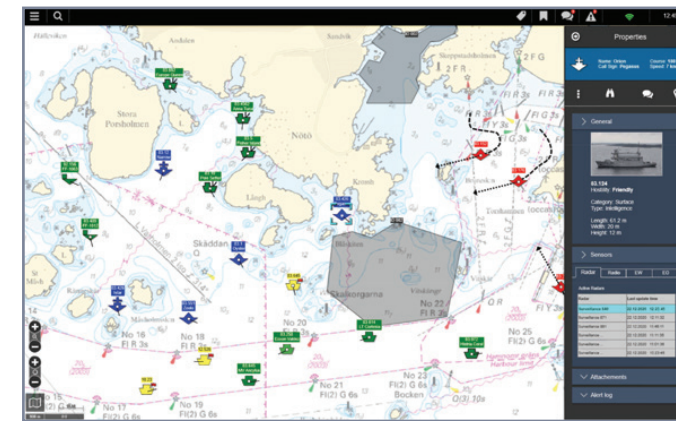
Multi-layered, network-enabled maritime security command and control system-of-systems

Key Benefits

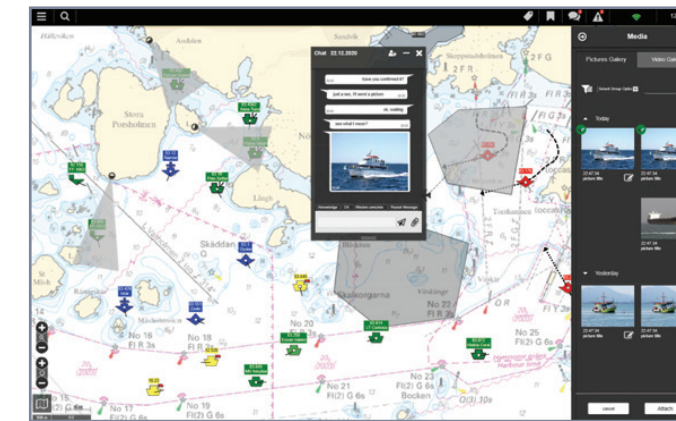
- Common situational awareness
- Early detection and real-time alerts
- Rapid "Sensor to Effector" response
- Future proof – designed for growth
- Recorded evidence about events
- Low life cycle cost
- Simple to use
- Meets the highest levels of cyber security

Key Features

- Comprehensive naval, airborne and ground security solution
- Integrated C², sensor and combat suite
- Maritime anomaly detection and threat assessment
- Modular and scalable
- Open architecture
- Integration with external 3rd party systems
- Support for embedded training



Comprehensive Situational Awareness Picture



Interaction with our forces and external information



Elbit Systems C⁴I and Cyber Ltd.
2 H'amachshev St., Netanya 42507, Israel
E-mail: landc4i@elbitsystems.com www.elbitsystems.com/landc4i

Follow us on   

ELBIT SYSTEMS C⁴I AND CYBER | C⁴I SYSTEMS

Integrated Marine and Coastal Security Solution

Multi-layered, network-enabled maritime security command and control system-of-systems



The logo, brand, product, service, and process names appearing herein are the trademarks or service marks of Elbit Systems Ltd. Its affiliated companies or, where applicable, of other respective holders. All information in this document is for general information only, and is subject for change without notice. © 2017. This document contains Elbit Systems and others' proprietary information. EP-19-MK-1-003



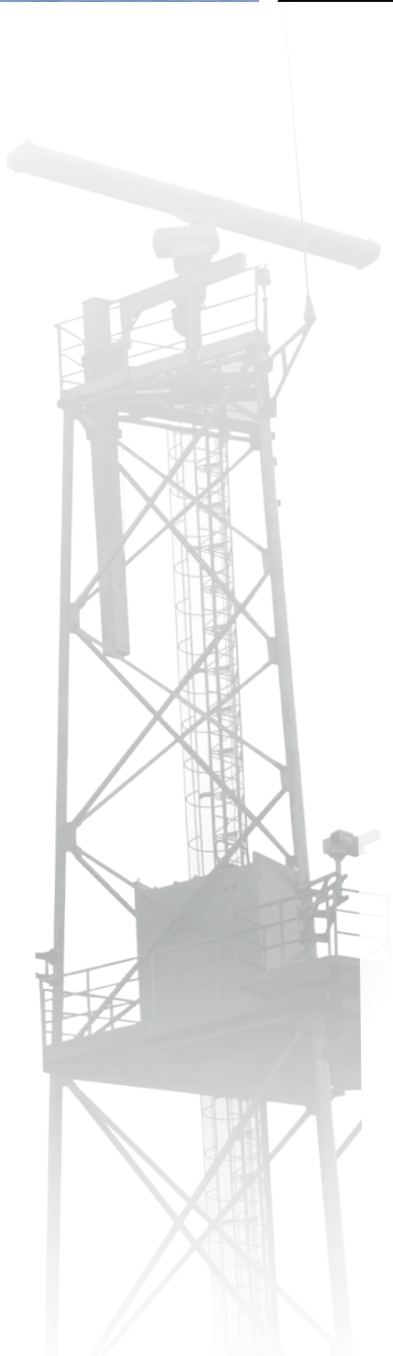


Comprehensive C³I²SR security framework

Elbit Systems C⁴I & Cyber offers a multi-layered – naval, airborne and ground – Marine and Coastal Security Integrated Solution that provides real-time regional surveillance, early warning, and maritime-patrol mission management and targeting in support of military and homeland security initiatives.

The comprehensive C³I²SR framework integrates and connects Communication, Command & Control, computers, cyber, intelligence, information, Surveillance and Reconnaissance, delivering superior situational awareness and reducing response times at all stages of an event. The constant flow of information provides the decision-makers with tools to reach quality decisions based on detailed, accurate and updated information, under all weather conditions.

The solution is ideal for securing naval bases, ports, oil & gas terminals, offshore platforms, underwater pipelines and cables, nuclear power facilities and canals. It is already deployed and operational by the **Israeli Navy, South East Asia Navy, and other European and Central American fleets.**



Fully integrated solution: Maritime security regional sources and resources are linked – including mobile and deployed command posts and maritime patrol units – equipping them with proven, highly-advanced C³I²SR systems and tactical sensors. Open architecture provides full interoperability with external 3rd party systems, achieving a common operating picture.

Sensor-driven command and control: Strategic and tactical ISR sensor arrays, including observation towers, radar posts, fixed cameras and smart fences, are all efficiently controlled and managed within the C³I²SR system. The integrated sensors contribute toward full connectivity through highly advanced telecommunication systems and incorporate data, audio and video services.

AI-driven data fusion: Best-in-breed technologies and advanced software creates a C³I²SR framework adapted to the modern battlefield. Sophisticated Big Data-based technologies enable full data synchronization and data fusion that speeds up the decision-action cycle at the tactical, regional and strategic levels.

Built on proven experience: Elbit Systems C⁴I & Cyber has delivered numerous complex and large-scale integrations globally, including to NATO and 5-Eyes nations. Decades of experience in the defense industry, expert team and cutting-edge technologies, have resulted in a proven track record of high-tech air, land and sea programs.

System Components

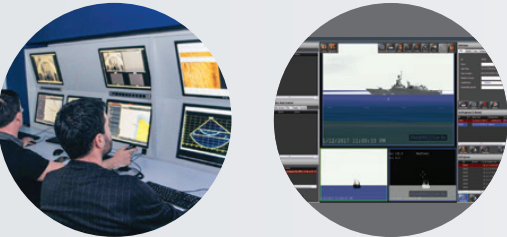
Communications

Sophisticated communication infrastructure enables voice, data and video connectivity by various means, such as e-Lynx mobile tactical communications, HF radios, Satellite Communication, and GRX radio relay system. It achieves dynamic network connectivity, availability and flexibility with complete compatibility to commercial and military communication standards during routine and crisis situations.



Command and Control (C²)

Flexible and scalable, the solution integrates C³I²SR capabilities (based on the TORCHTM application) as well as GIS, automatic identification system (AIS), radar and EO imagery, live video streaming, full data management capabilities and high-end communication services. It enables seamless interoperability with external systems, and governmental and civil agencies, via standard protocols.



Computer Hardware

Software can be installed on multiple types of computers: desktops, tablets, mobile, ruggedized computers and others. Designed to operate in even the harshest conditions, the versatile range of tactical computers are operationally-proven and currently in use by numerous naval fleets around the world.



Cyber Protection

Security assurance is an integral part of Elbit Systems C⁴I & Cyber's development lifecycle, with all activities adhering to the highest levels of cyber security, including systems engineering, software development and testing.

